

# San Luis Rey River Sediment Removal Project



October 3, 2017

# SLRR Sediment Removal

- Project is under the jurisdiction of the Army Corps of Engineers
- Increase flow capacity in the river, and is the next step following vegetation mowing, to move the river closer to a 100-year flood level capacity
- Project will remove approximately 230,000 cubic yards of sediment from river
- Removal will take place from west of Benet Road to east of Foussat Road (approximately 1.5 miles)

# Map of Project Limits



# SLRR Sediment Removal

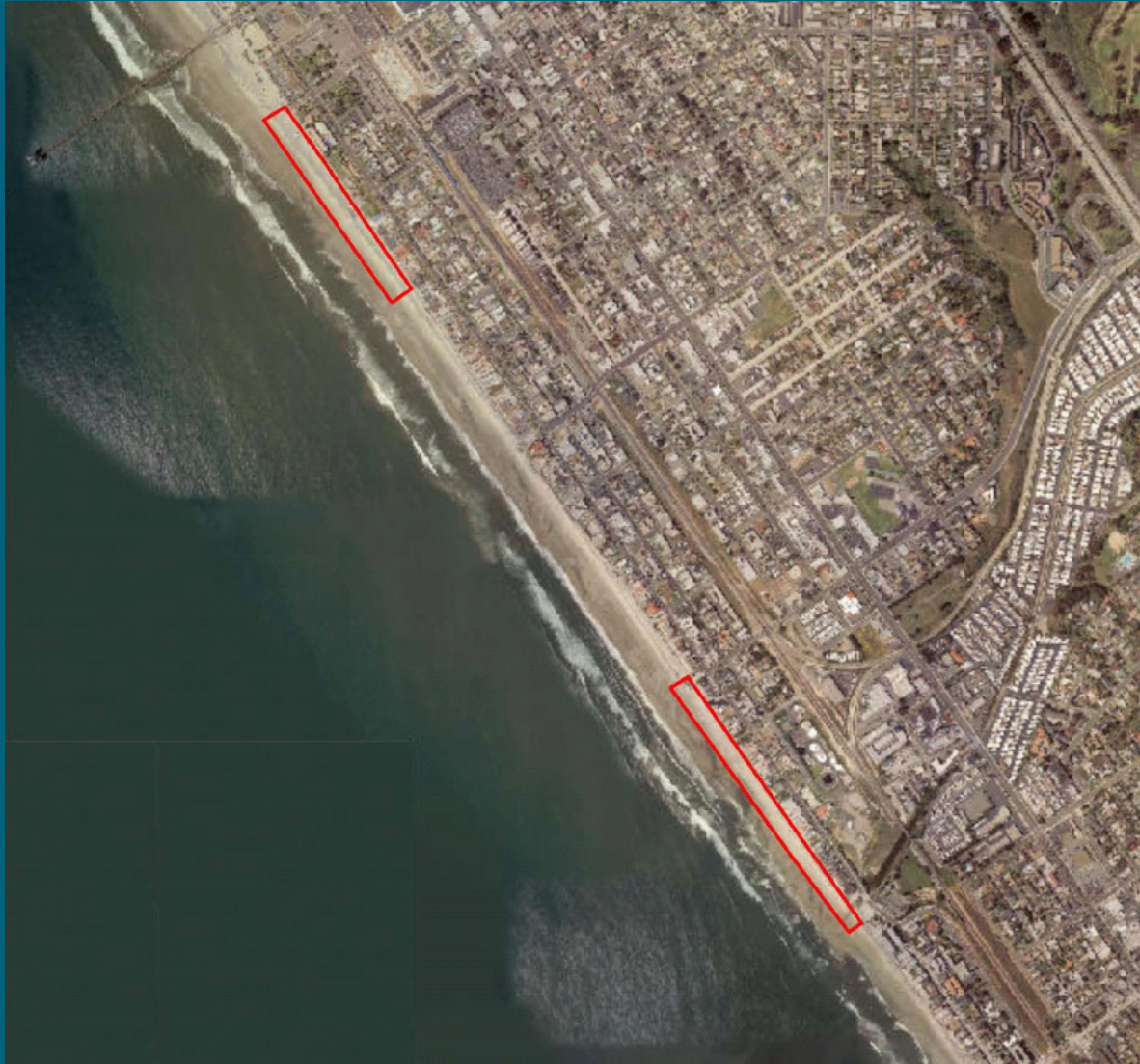
- 90% of sediment is classified as “beach quality” sand
- Beach quality sand will be deposited on City beaches at 2 placement sites:

Seagaze Drive to Pine Street

Oceanside Boulevard to Buccaneer Beach



# Map of Placement Sites



Northern Placement Site  
Seagaze Drive to  
Pine Street

Southern Placement Site  
Oceanside Blvd to  
Buccaneer Beach

# SLRR Sediment Removal

- Unsuitable material will be deposited at El Corazon
- Work should start this week and must be completed by March 15, 2018
- Heavy construction equipment and dump trucks running continuously for 10 hours a day, 6 days a week
- San Luis Rey Bike Trail will be completely closed during the project (early October, 2017 – March 31, 2018) from Foussat Road to Douglas Drive
- USACE requires closure for safety purposes, due to the amount of heavy equipment and truck traffic on the levee and the potential for considerable pavement damage



# Map of Bike Detour



# SLRR Sediment Removal

Bike detour - Trail users traveling westbound will initially encounter the closure/detour starting at Douglas Drive. The detour will direct traffic south on Douglas Drive, west on Pala Road, south on Los Arbolitos Boulevard, south on Fireside Street, west on Mission Avenue and continues west across the old Drive In site and then north on Foussat Road where the trail can be accessed again